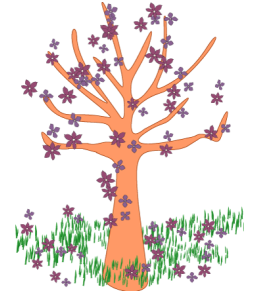




*The Mitre*

# St John's C of E Primary School



## **Dates for your diary: Spring Term 1: February 2017** *(details for specific events will follow)*

**Tuesday 7<sup>th</sup> February** – Year 2 SATs meeting – **5.00pm**

**Wednesday 15<sup>th</sup> February** – Years 5 & 6 St Valentine's disco – **6.00pm – 7.30pm**

**Thursday 16<sup>th</sup> February** – Café style Family Service – **3.30pm to 4.30pm** in the school hall, families and friends welcome to attend

**Friday 17<sup>th</sup> February** – Break up for the half term break

**Monday 27<sup>th</sup> February** – Pupils return to school

**Thursday 2<sup>nd</sup> March** – World Book Day – Children to dress up as a book character for the day. £1.00 donation please in support of Book Aid International

**Tuesday 14<sup>th</sup> March** – Parents' Evening - **5.00pm – 7.00pm**

**Wednesday 15<sup>th</sup> March** – Parents' Evening – **6.00pm – 8.00pm**

**Week beginning 20<sup>th</sup> March** – PTA Mothers' Day gift sale at lunchtimes in school

**Thursday 23<sup>rd</sup> March** – Nursery & Reception Mothers' Day assemblies:

**9.30am** – Morning Nursery and Class RM

**2.00pm** – Afternoon Nursery and Class RH

**Friday 24<sup>th</sup> March** – Comic Relief Activities – whole school

**Week beginning Monday 3<sup>rd</sup> April** - Easter egg decoration/colouring competition

**Wednesday 5<sup>th</sup> April** – Arts Festival

**Thursday 6<sup>th</sup> April** – Reception and Nursery Easter bonnet parade:

**9.30 am** – Morning Nursery and Class RM

**2.00pm** – Afternoon Nursery and Class RH

**Friday 7<sup>th</sup> April** – PTA Easter Egg Hunt

**Friday 7<sup>th</sup> April** – Break up for the Easter holidays

**Monday 24<sup>th</sup> April** – Pupils return to school

**Monday 1<sup>st</sup> May** – May Day bank holiday – school closed

**Monday 8<sup>th</sup> May – Thursday 11<sup>th</sup> May** - Year 6 SATS

**Monday 22<sup>nd</sup> to Friday 26<sup>th</sup> May** – Year 6 residential

**Friday 26<sup>th</sup> May** – Break up for the half term break

**Monday 5<sup>th</sup> June** – **Staff Training day – school closed to pupils**

**Week beginning Tuesday 6<sup>th</sup> June** – PTA Fathers' Day Gift Sale at lunchtimes in school

**Tuesday 6<sup>th</sup> June** – Pupils return to school

**Thursday 8<sup>th</sup> June** – PTA Circus show 'Flippy & Dippy' - in school **6.00pm – 8.30pm**  
(information on ticket sales to follow)

**Friday 30<sup>th</sup> June** – Summer Barbeque event (reserve date in the event of poor weather will be Friday 7<sup>th</sup> July)

**Friday 21<sup>st</sup> July** – Break up for the summer holiday

**Please note Monday 24<sup>th</sup> & Tuesday 25<sup>th</sup> July are staff training days**

**STAFF TRAINING DAYS: ACADEMIC YEAR 2016/2017:**

**Monday 5<sup>th</sup> June 2017**

**Monday 24<sup>th</sup> July 2017**

**Tuesday 25<sup>th</sup> July 2017**

**There no further training days for this academic year**

**Severe Weather**



Should we experience a heavy snowfall we will do our utmost to keep the school open, but in the event of an enforced closure we will notify parents by the following methods:

- By text message via Parentmail (please ensure that your mobile numbers and email addresses are up to date, as only you can amend this information on your Parentmail account)
- Via our website: [www.st-johns.walsall.sch.uk](http://www.st-johns.walsall.sch.uk) - a message will be displayed on the home screen
- Via our Twitter account - @StJohnsCofEWW
- The local radio stations will also be informed including:  
Free Radio (97.2FM) Heart FM (100.7FM) Radio WM (95.6FM)